



# BEE MINDFUL

HAPPY BEES, NATURALLY

---

**Easy Horizontal Beekeeping  
to source your own  
Unfiltered, Raw Honey**





**Nathalie B.**

**Certified Master Beekeeper**

Past HCBA President, AABA VP & TBA Director

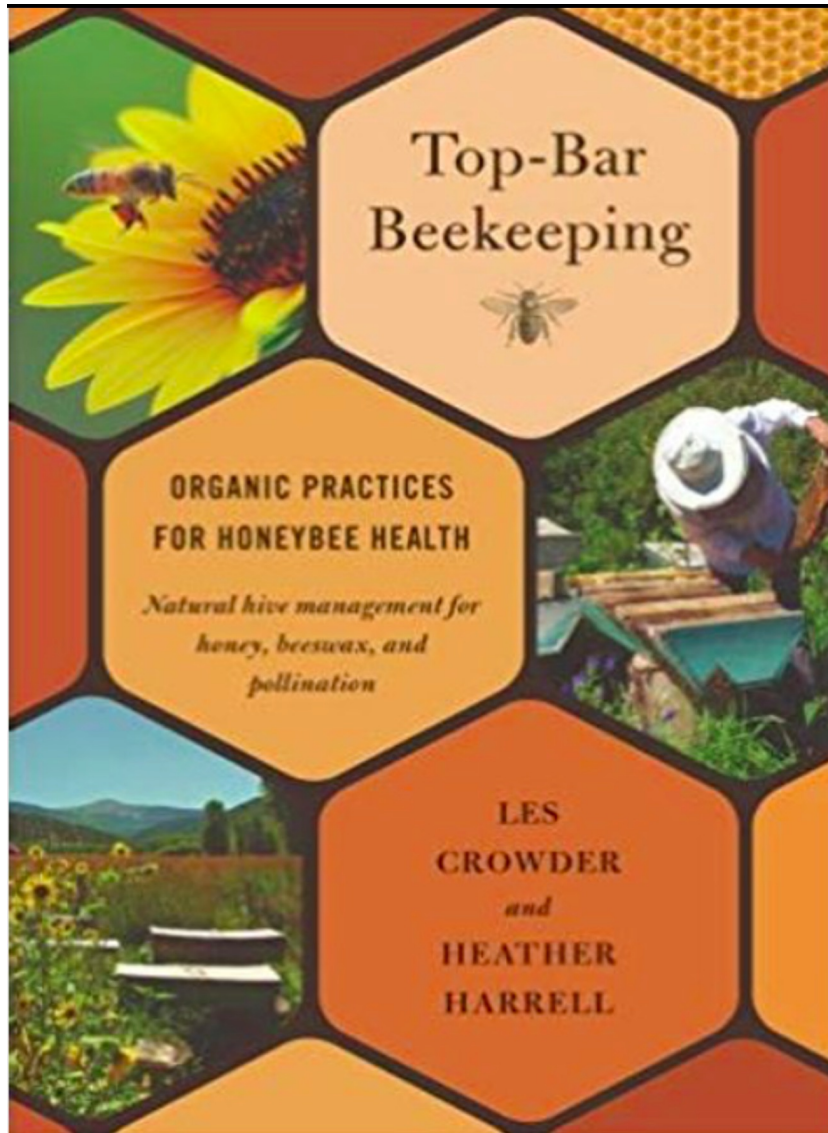
Real Texas Honey Director

MBA, The Ohio State-University

Engineering Background

# Natural Beekeeping Corner





**Les Crowder**  
Expert Beekeeper, Biologist, Philosopher

# What we will discuss

---

Products of the Hive

---

Bee Biology

---

Beekeeping philosophies

---

Main Hive Types & Pros Cons

---

Commercial beekeeping

---

Backyard Beekeeping

---

Building Hives

---

Apiary Setup

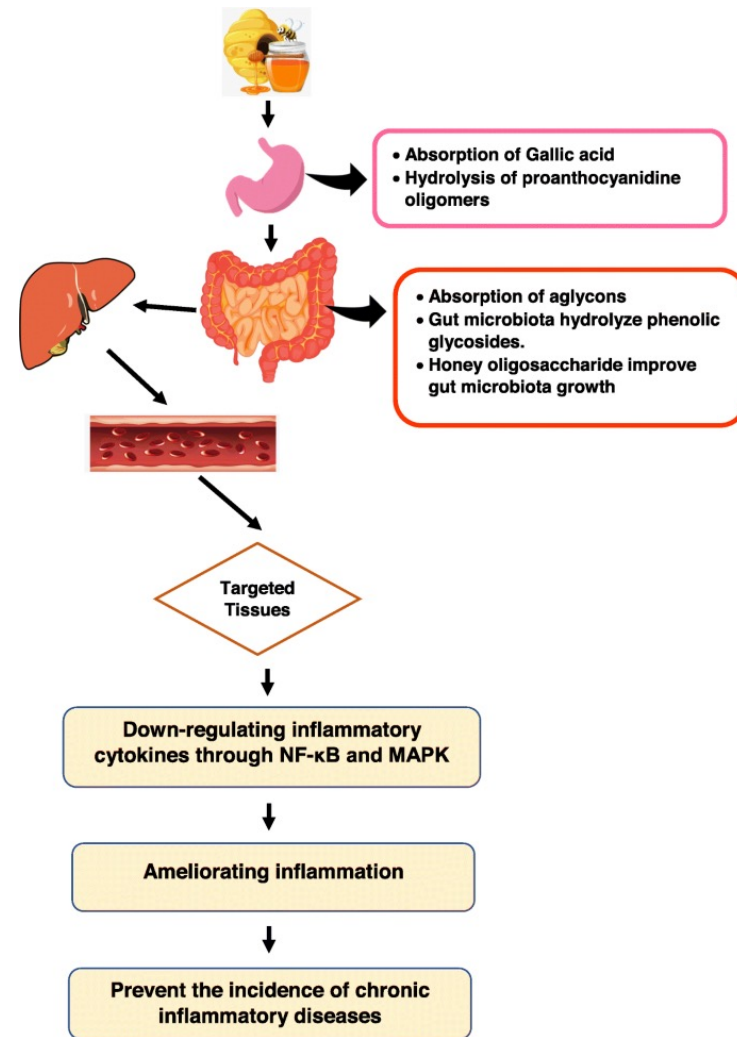
---

Tools & Gear

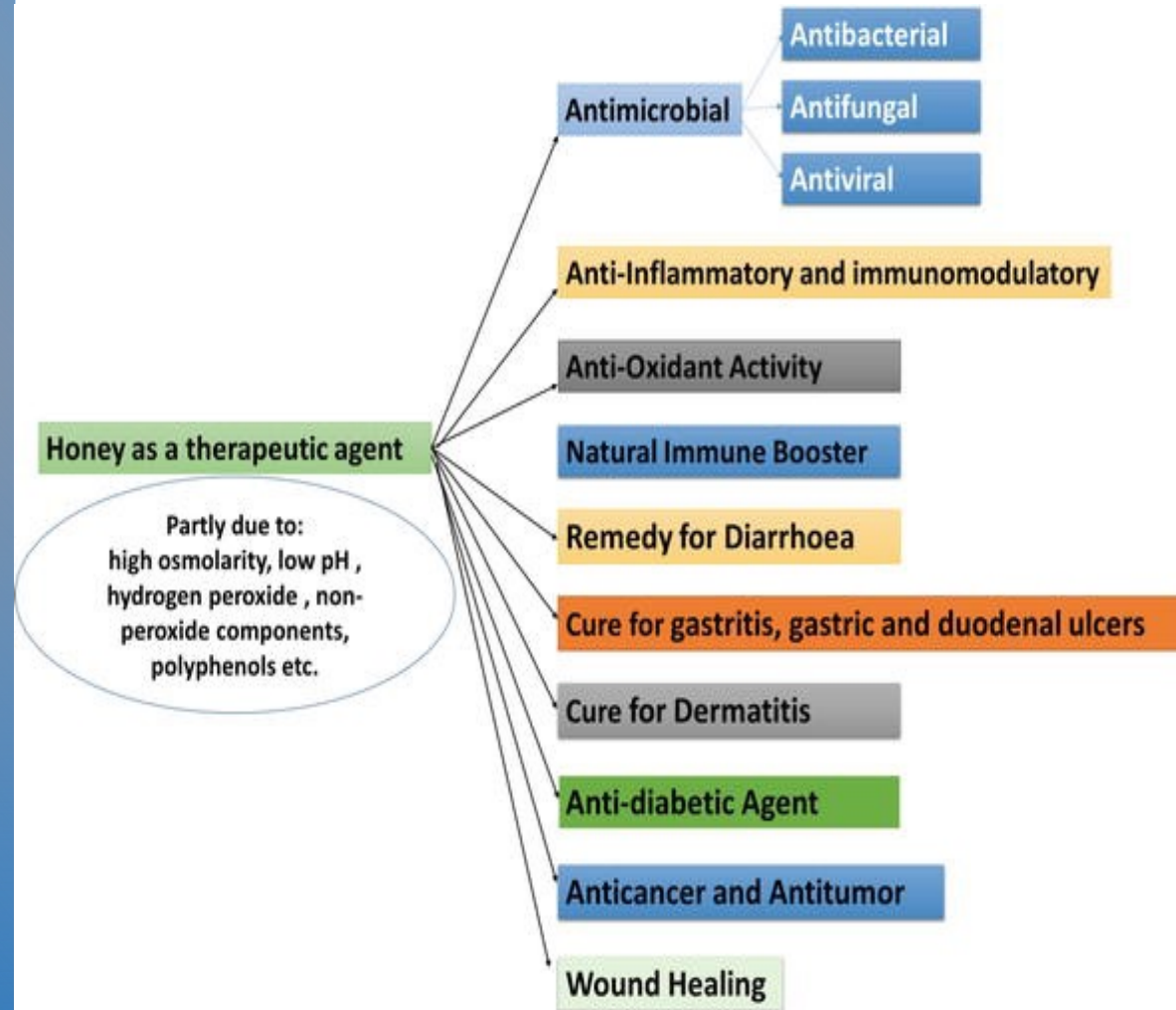
**H  
O  
N  
E  
Y**



# Nutritional and anti- inflammatory value



# Theapeutic Properties of Honey



- <https://www.intechopen.com/chapters/67503>

# Liquid Honey





# Creamed Honey

spun  
whipped



# Comb Honey



# Chunk Honey







Hive products



# Beeswax / Honey SOAPS

# Foodwraps

---



# BEE BIOLOGY



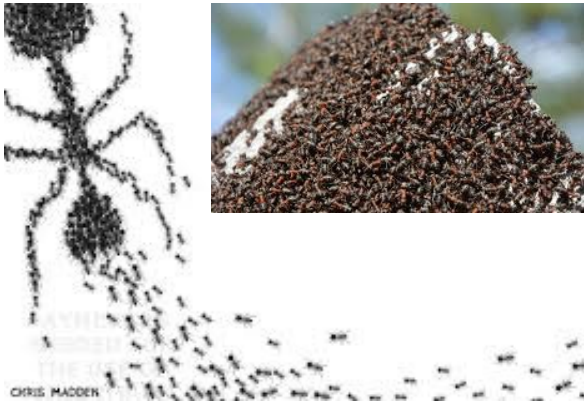


# What is a Superorganism?

It is an organism consisting of many smaller organisms

It is a social unit of animals, with:

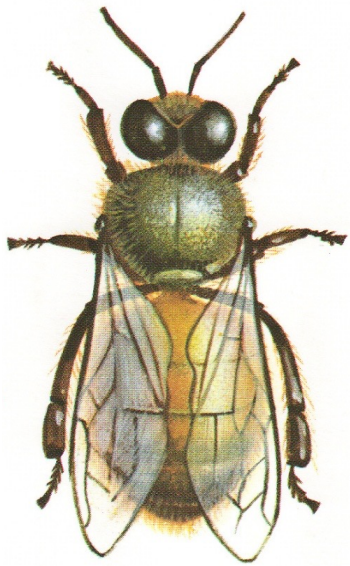
- Division of labor
- A single reproductive female
- collectively care for the young and food collection
- No individual survival





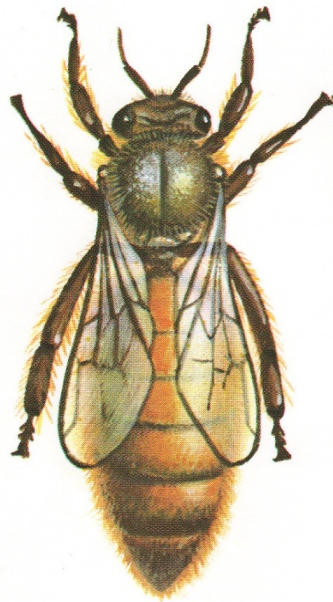
# The Superorganism

# Castes of the Honey Bee



Drone

2-3 months



Queen

5-6 years



Worker

4-6 weeks



Winter Bee

3-5 months



# Occupants of the Hive

1 Queen



Up to 50,000 Workers



Up to 15,000 Drones



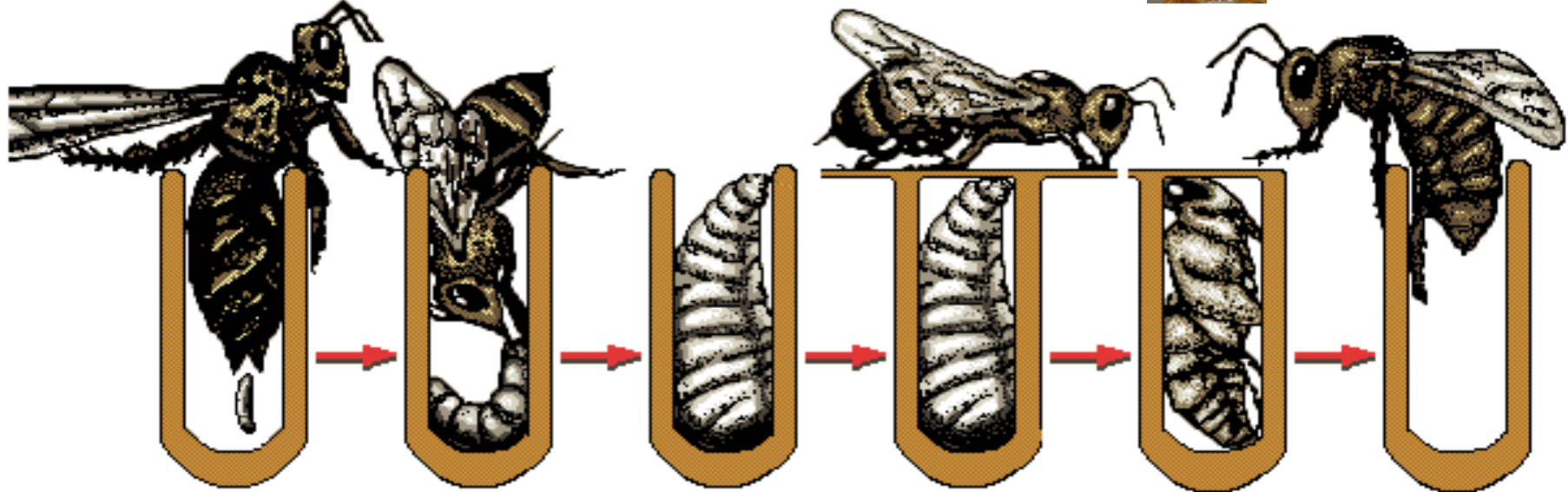
honeybee  
(*Apis mellifera*)



© 2006 Encyclopædia Britannica, Inc.



# All honey bees come from eggs and go through **metamorphosis**



Queen lays egg in wax cell

Worker feeds hatched larva

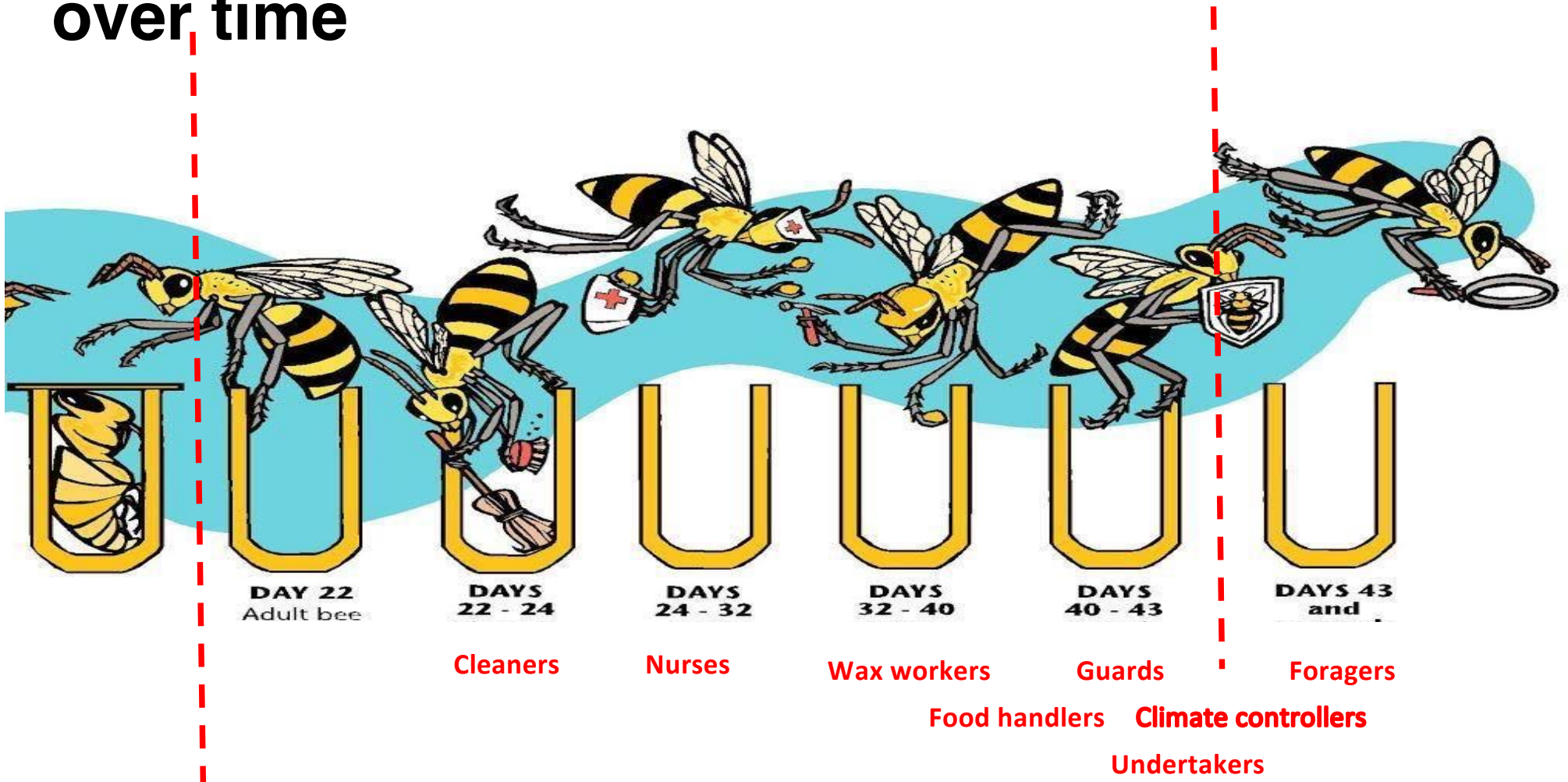
Larva reaches full growth

Worker seals cell

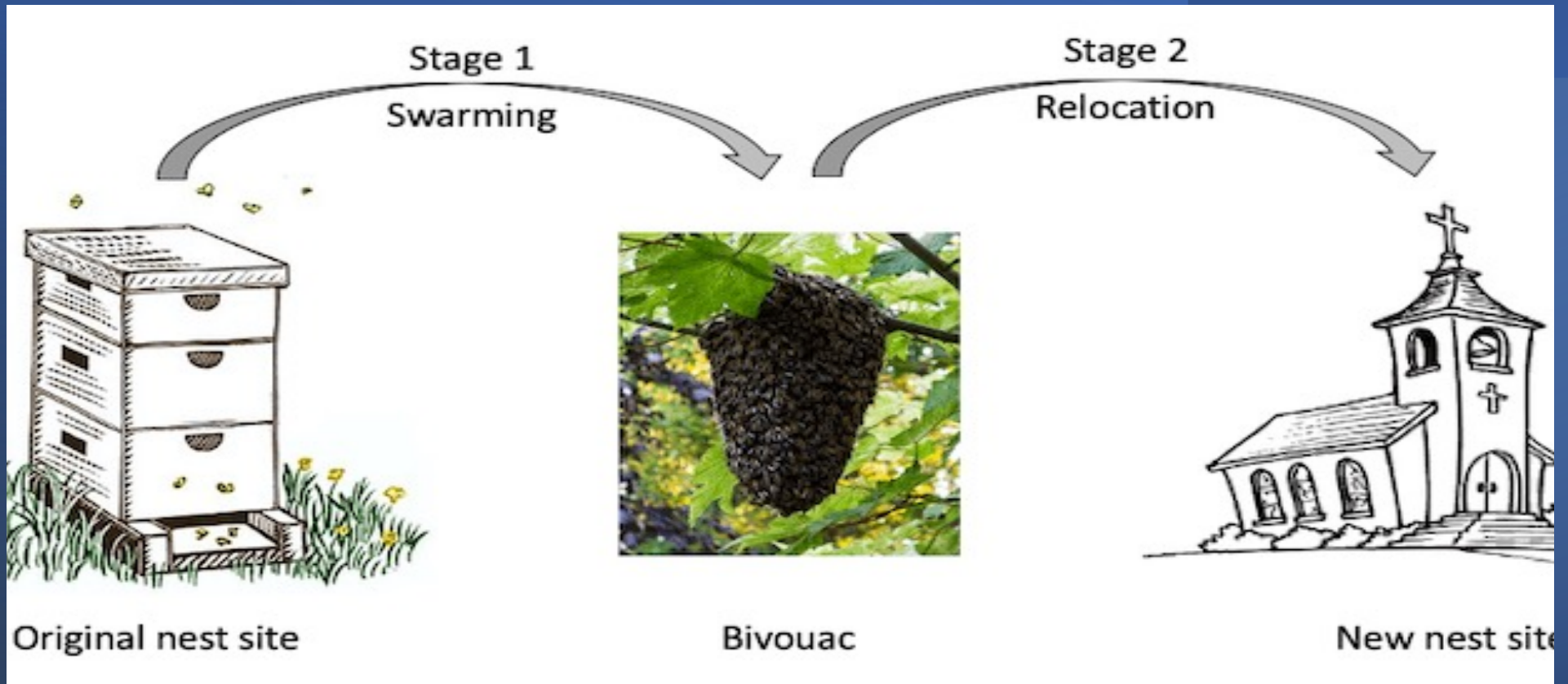
Larva becomes a pupa

Adult bee leaves cell

# Jobs performed by the Worker Bees over time



# SWARMING = colony reproduction





## **CHOOSING THE RIGHT HIVE FOR YOU**





\$\$\$\$

\$

PHILOSOPHY



WHAT  
BEES  
WANT

Beekeeping  
as Nature  
Intended

Susan Knilans &  
Jacqueline Freeman

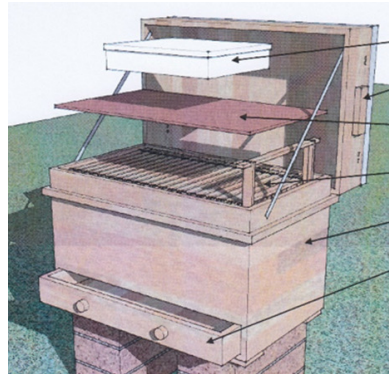
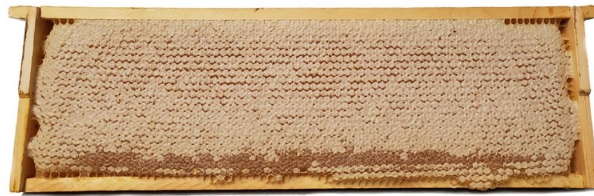


TFR

TF

# Main Hive Styles

Frames vs.  
frameless

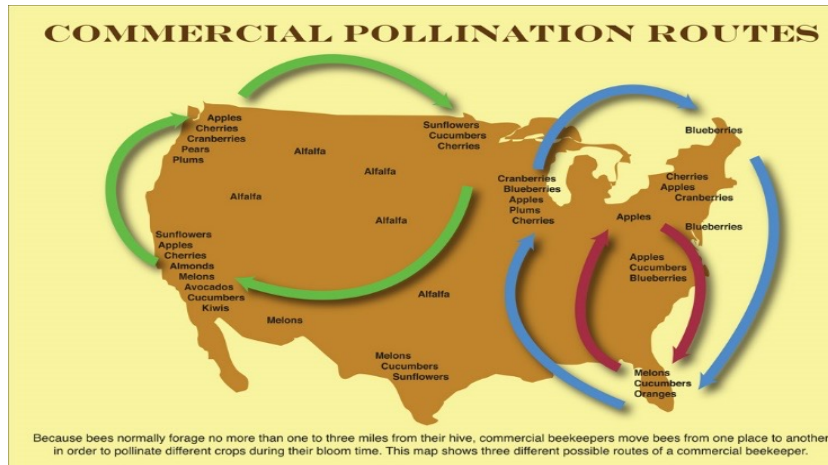


**LANGSTROTH**

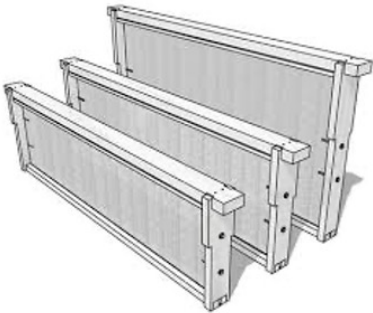
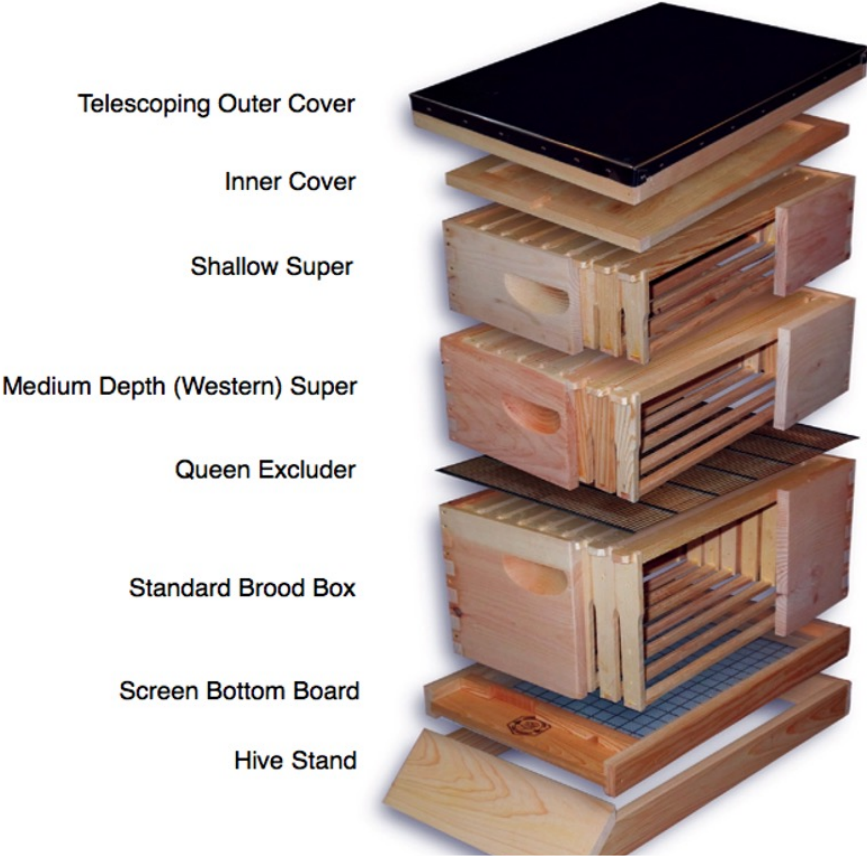


**HORIZONTAL TOP-BAR**

# Commercial Beekeeping



# FRAME BEEKEEPING



# Heavy



Shallow Super 45 lbs

Medium Super 60 lbs

Deep Super 90 lbs

# Expensive



Low end

\$150

Average

\$300

High End

\$800



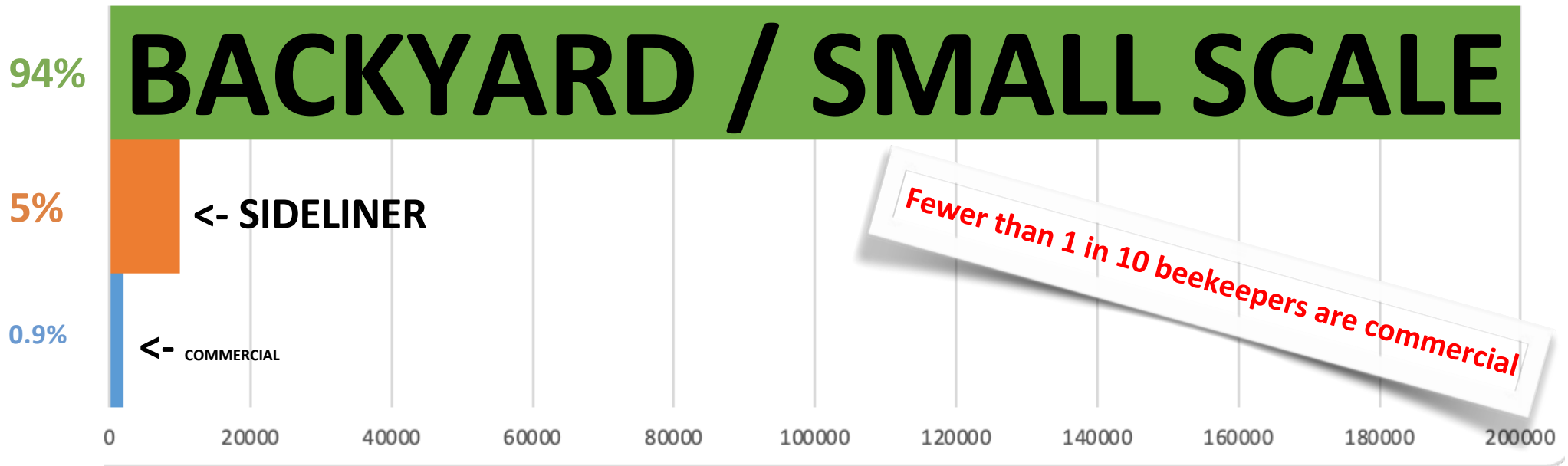
**Expensive in Money AND Time**



**Storing Supers and Frames off season**



# BEEKEEPER CATEGORY DISTRIBUTION





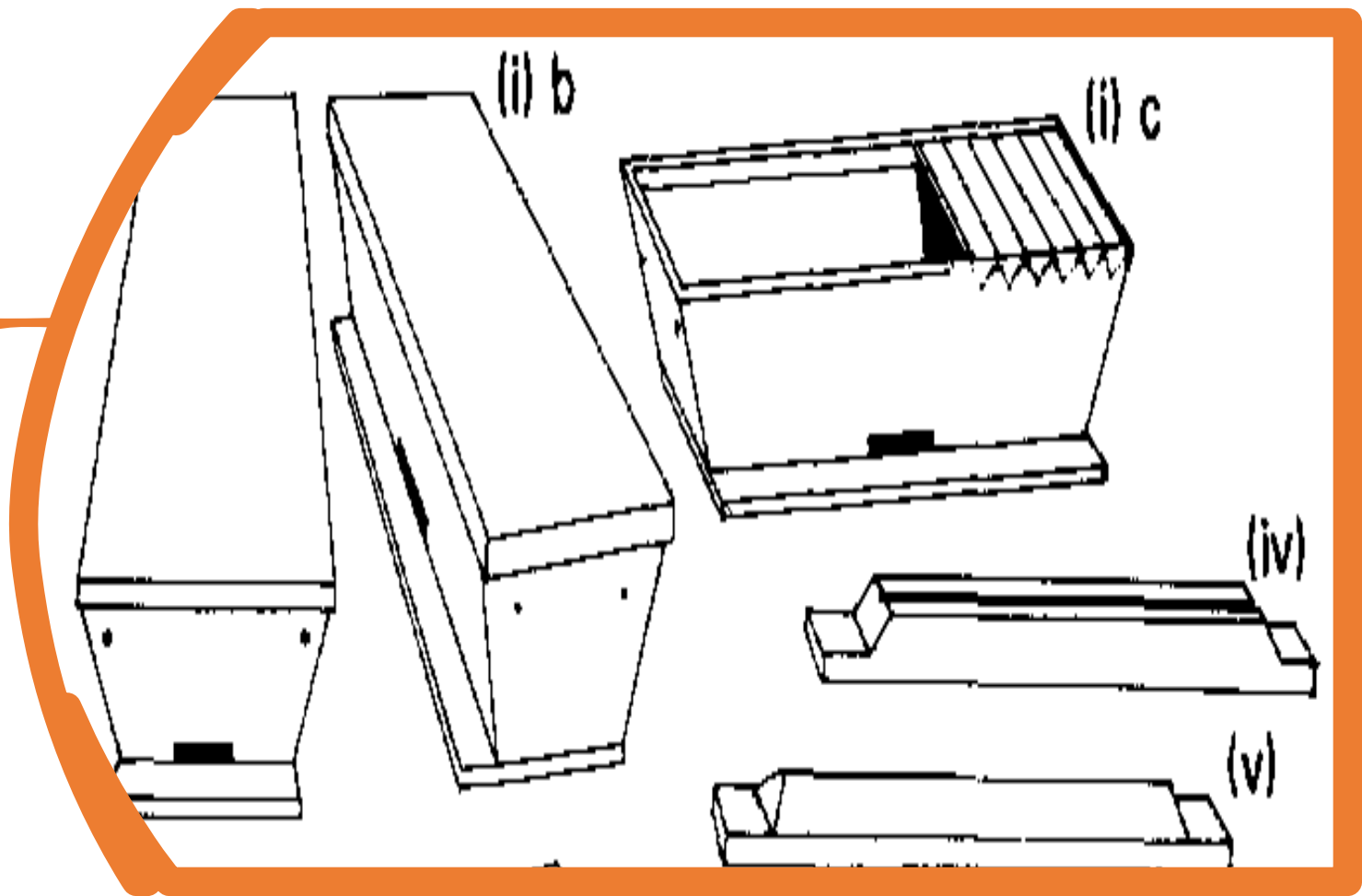
Horizontal



Vertical



**HORIZONTAL  
FRAMELESS  
HIVES**



**Better for the Bees, and the  
Beekeepers Back & Budget**







# Horizontal Expansion





# Beekeeping With A Smile

---

*Weightless*

**COST  
EFFECTIVE**

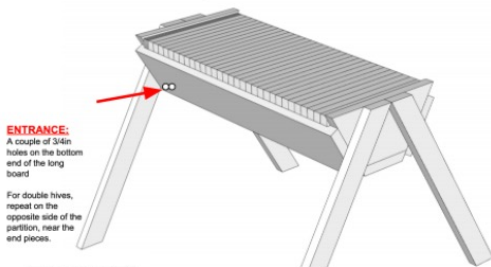


# GO HORIZONTAL!

# 2hrs, \$50, 2 colonies!

## The LES-IS-MORE Horizontal Hive® Plans

**BASIC DESIGN: Single LES-IS-MORE Horizontal Hive®**

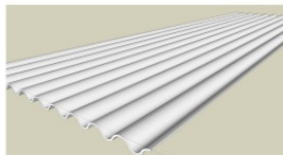


FREE PLANS @  
[Bee-Mindful.com/plans](http://Bee-Mindful.com/plans)

Copyright 2018© Bee Mindful, LLC

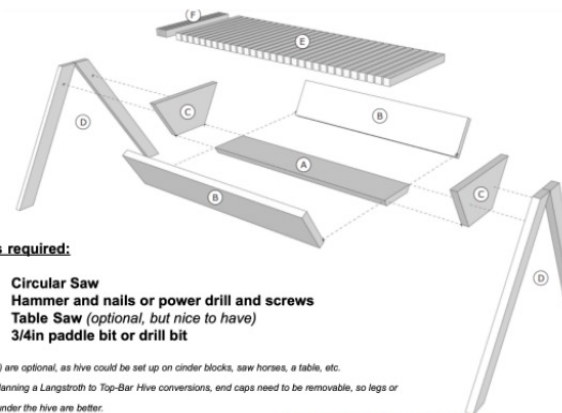


**BEE MINDFUL**  
HAPPY BEES, NATURALLY



This hive requires a rain cover, such as corrugated metal

## The LES-IS-MORE Horizontal Hive® Plans Assembly



**Tools required:**

- Circular Saw
- Hammer and nails or power drill and screws
- Table Saw (optional, but nice to have)
- 3/4in paddle bit or drill bit

Legs (D) are optional, as hive could be set up on cinder blocks, saw horses, a table, etc.  
When planning a Langstroth to Top-Bar Hive conversions, end caps need to be removable, so legs or stands under the hive are better.

Copyright 2018© Bee Mindful, LLC



**BEE MINDFUL**  
HAPPY BEES, NATURALLY

Unless otherwise specified, all angled cuts are at 30°



# MATERIALS & TOOLS



# ASSEMBLY







# BEEKEEPING WORKSHOPS

[Bee-Mindful.com/workshops](https://www.Bee-Mindful.com/workshops)

[BeeMindfulHoneyFarms@gmail.com](mailto:BeeMindfulHoneyFarms@gmail.com)

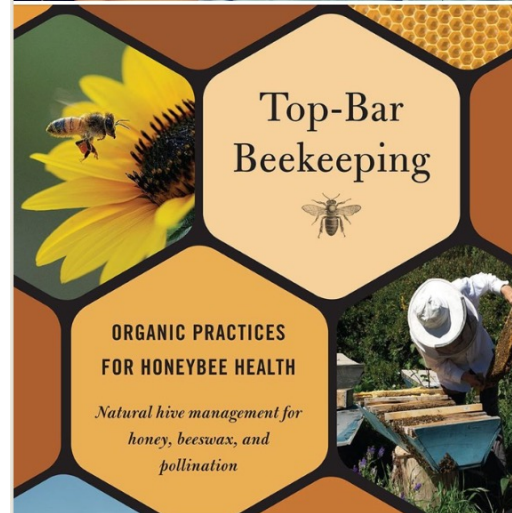
Nov. 2023

Mar. 2024

Check out the upcoming [Les Crowder](#) Workshops for Beekeeping Training!

- **Les Crowder** is a legend of Natural, Treatment-Free Beekeeping, a trained biologist, and the author of the world renowned book "**Top-Bar Beekeeping: Organic Practices for Honey Bee Health**". An avid beekeeper since 1971, he's been successfully treatment-free since shortly after the arrival of the mites in the US in 1987 (for over 35 years!), and is the pioneer of Horizontal Beekeeping in the US.
- Les Crowder Workshops are designed for Beginner to Advanced beekeepers looking to learn how to successfully keep their bees Simply, Naturally and Sustainably, without the use of pesticides or treatments, while reconnecting with and respecting the essence of this amazing animal.
- Les's methods are mindful of the bees and the beekeepers, and are designed to be inclusive and accessible to aspiring beekeepers of various walks of life and physical abilities, as they do not require upper body strength, a large budget, or off season storage. We often joke that his methods are Better for the Bees and the Beekeeper's Back and Budget (BBBBB).
- These amazing certificate-based workshops will take place several times in the Fall and Spring each year, so if a particular workshop is sold out, try another one or register well in advance!

Details and Registration at [www.Bee-Mindful.com/workshops](https://www.Bee-Mindful.com/workshops)



# Apiary Setup

- Good Forage
- Shade
- No flooding zones
- Hives off the ground
- Water source
- No more than 20-30 hives per apiary
- Good equipment
- Good Bees



# WATER SOURCES

Safe Landing  
30ft+





# Getting Bees



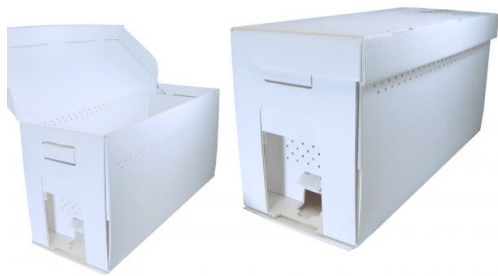


## Trapping Swarms



91

## Baiting traps



# Catching Swarms

# SPLITS



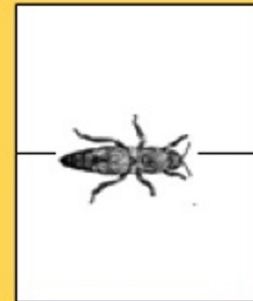
**Split  
strong  
colony  
before  
swarming**

New queen or cell



Young bees  
and most of  
the brood

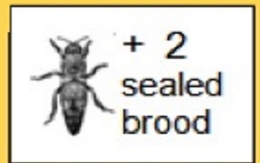
Queenless split



Colony ready  
to swarm



Old queen



Split into two  
hives

# CUTOUTS

- Leave it to the professionals!

- Permits
- Liability Insurance
- Special equipment
- Time
- Mad Skills
- Repairs





Packages



NUCs

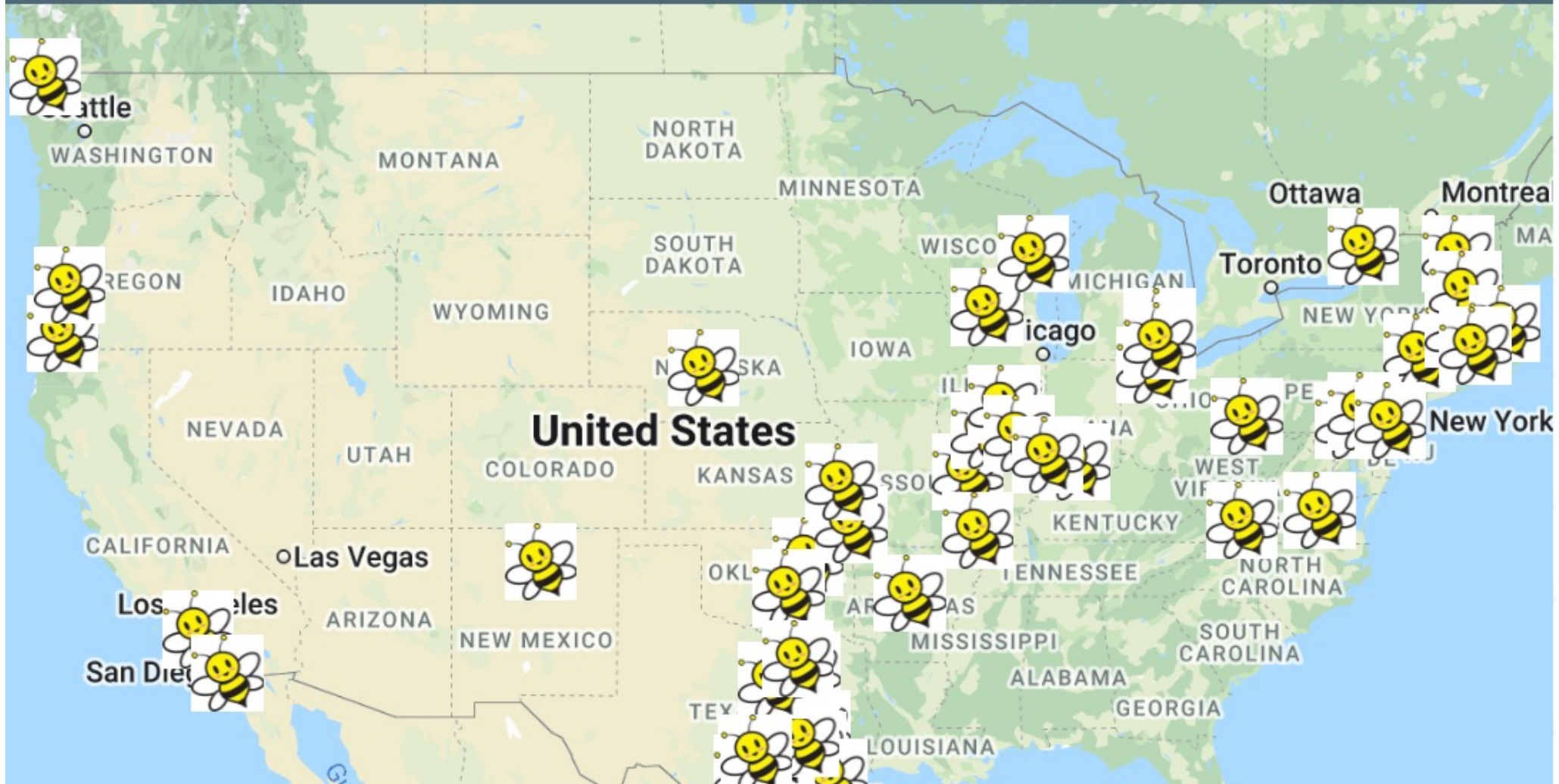


Established Colonies

# Buy Bees

- **AVOID** Italian or treated bees from commercial operations
- **LOOK FOR** Treatment-Free, Russians, Swarms

# Top-Bar Hives and NUC Providers





# TOOLS & GEAR



# Basic Equipment Checklist

Veil or Jacket/Suit with Veil

Hive tool

Smoker

Gloves



# Tools and Gear

---